

BCM NetView v1.0 Operation Manual

BCM NETVIEW CONNECTION DIAGRAM

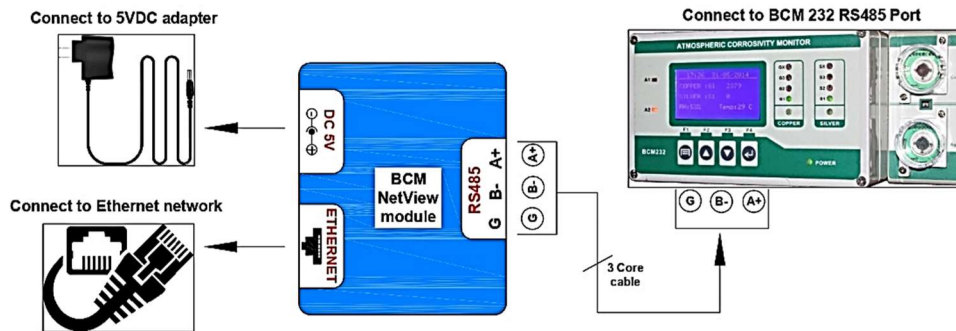
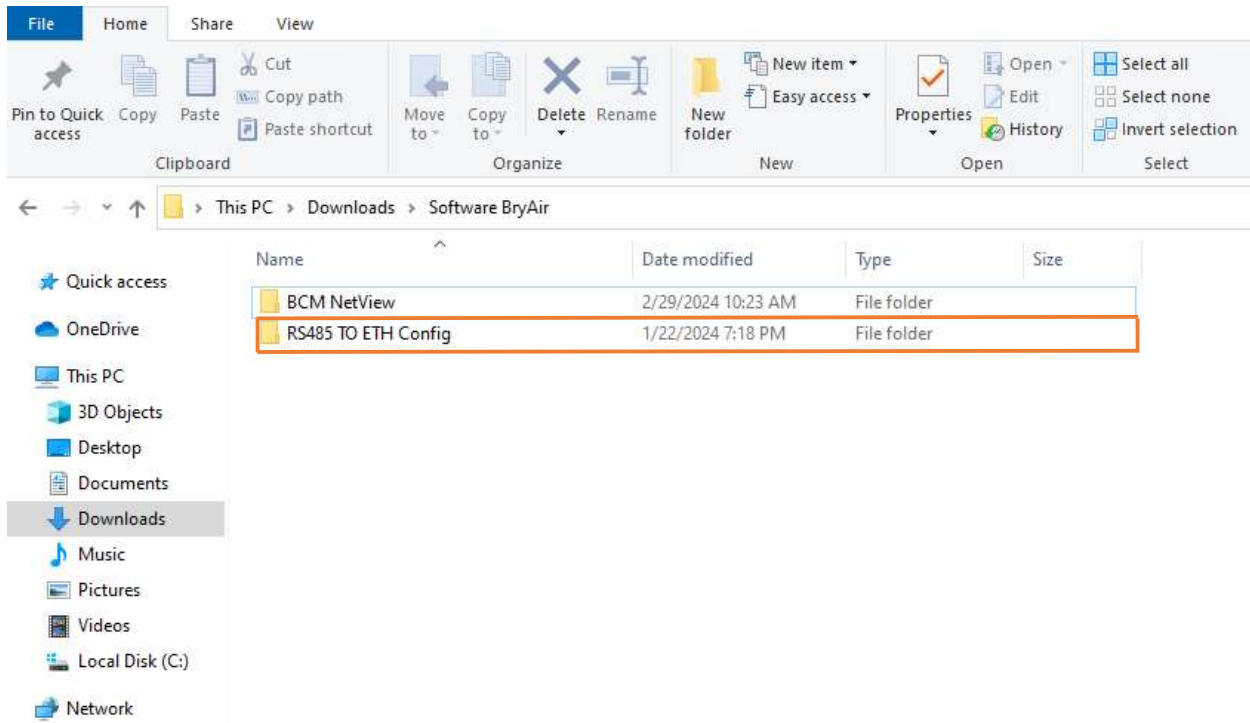


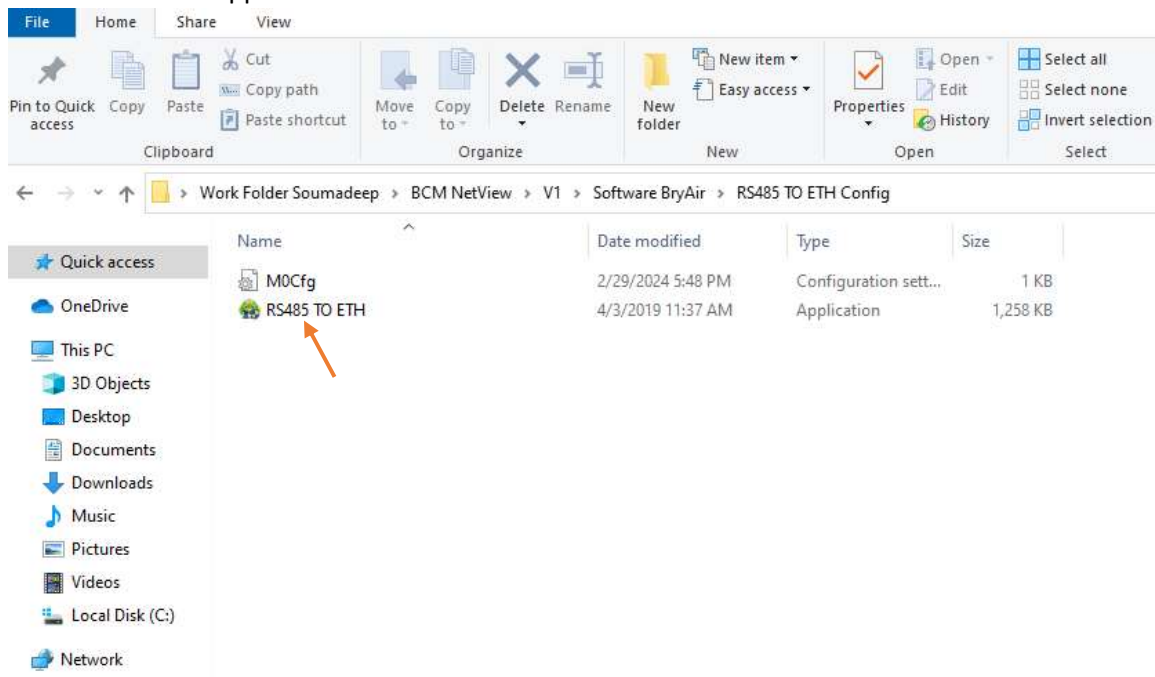
Fig. 1

Firstly, Connect RS485 output port to BCM NetView module as shown in Fig.1 also Connect the PC / Laptop through a LAN.

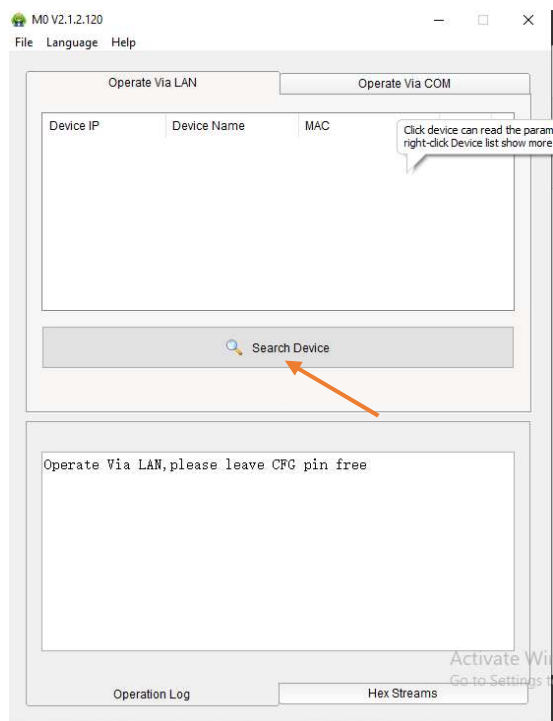
1. Open the folder “RS485 TO ETH Config”



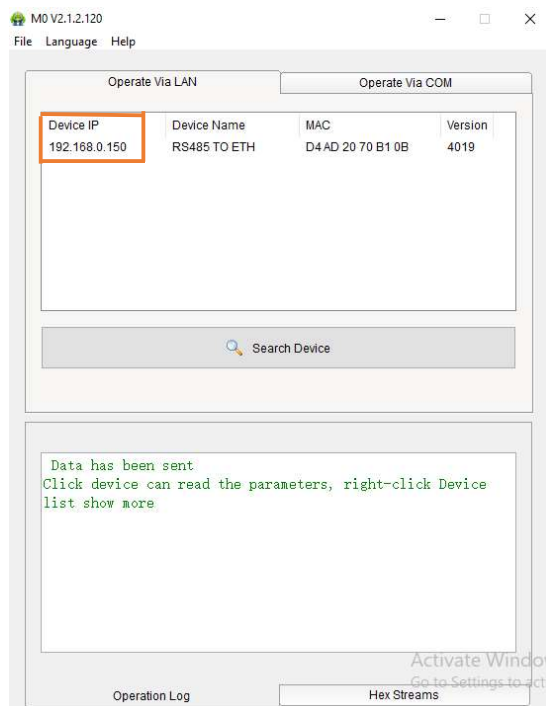
2. Double click that application



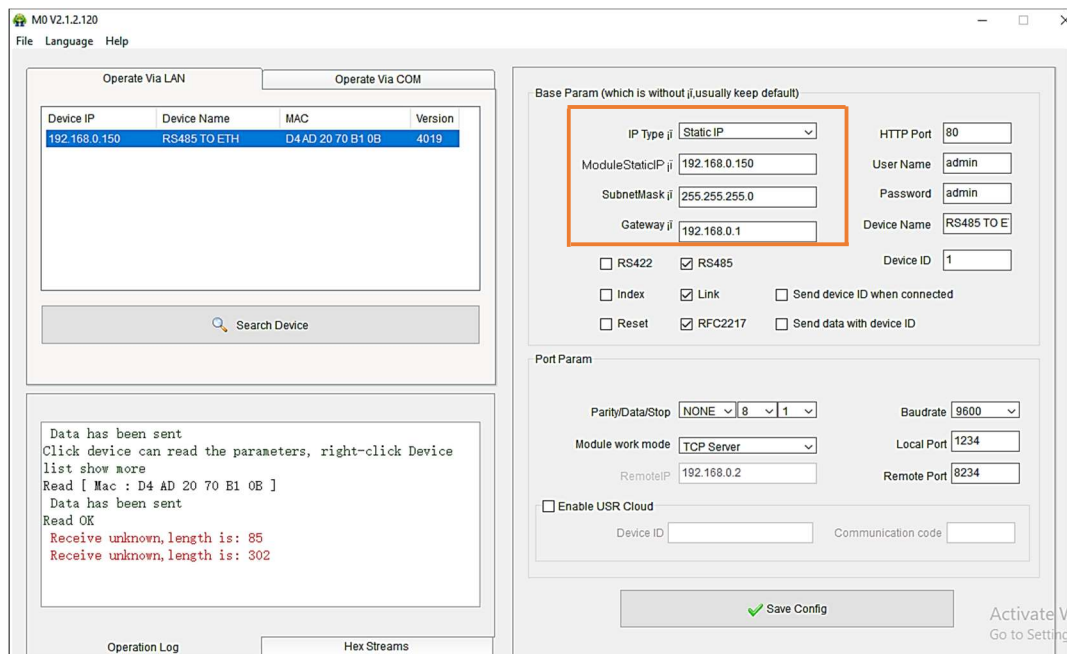
3. Click on “Search Device”



4. Inside the box IP of connected device will be shown

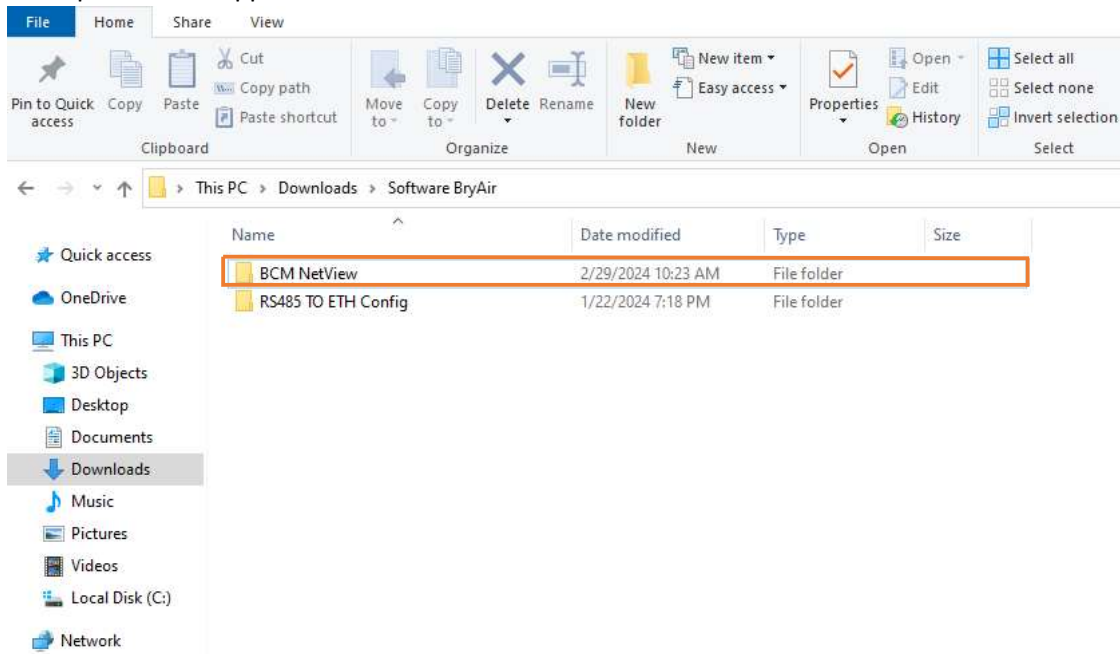


5. Click on device and Compare Subnet mask, default gateway and provide a suitable IP address according to your network environment. (Should be same as the router is providing, refer to the pictures mentioned below)

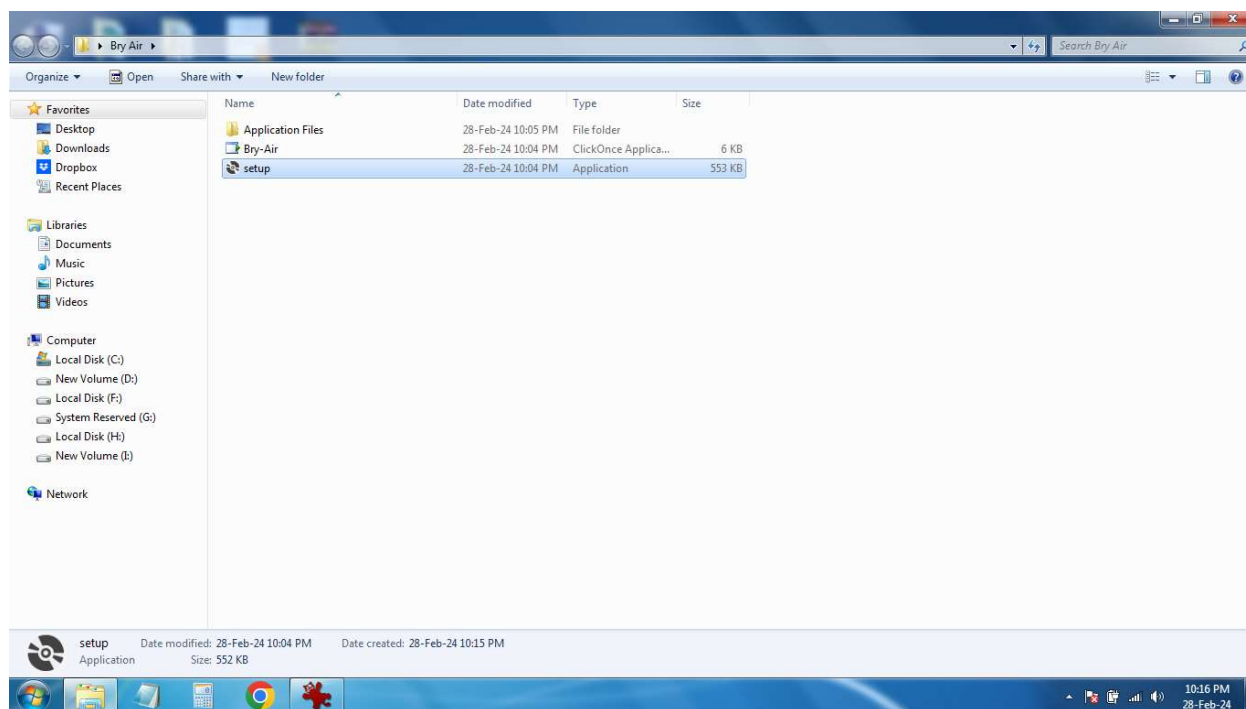


- i. After configuration click on **“Save Config”** and close that application.

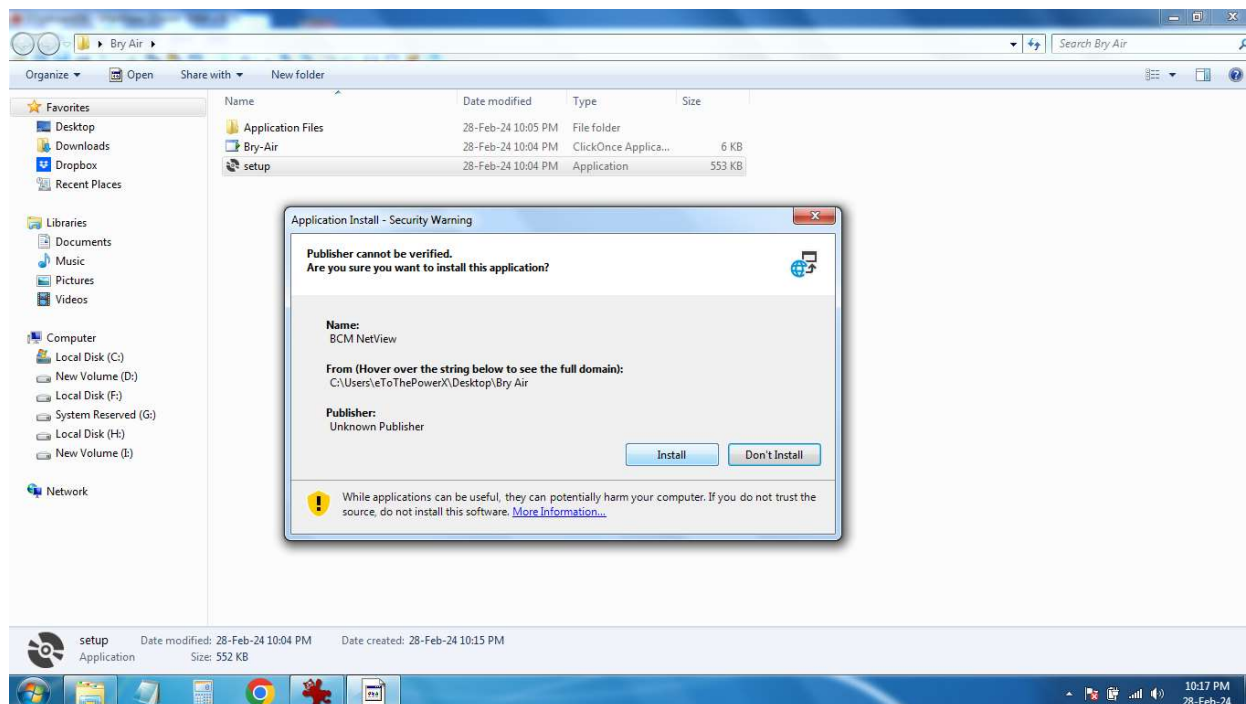
6. Now Open second application named “BCM NetView”



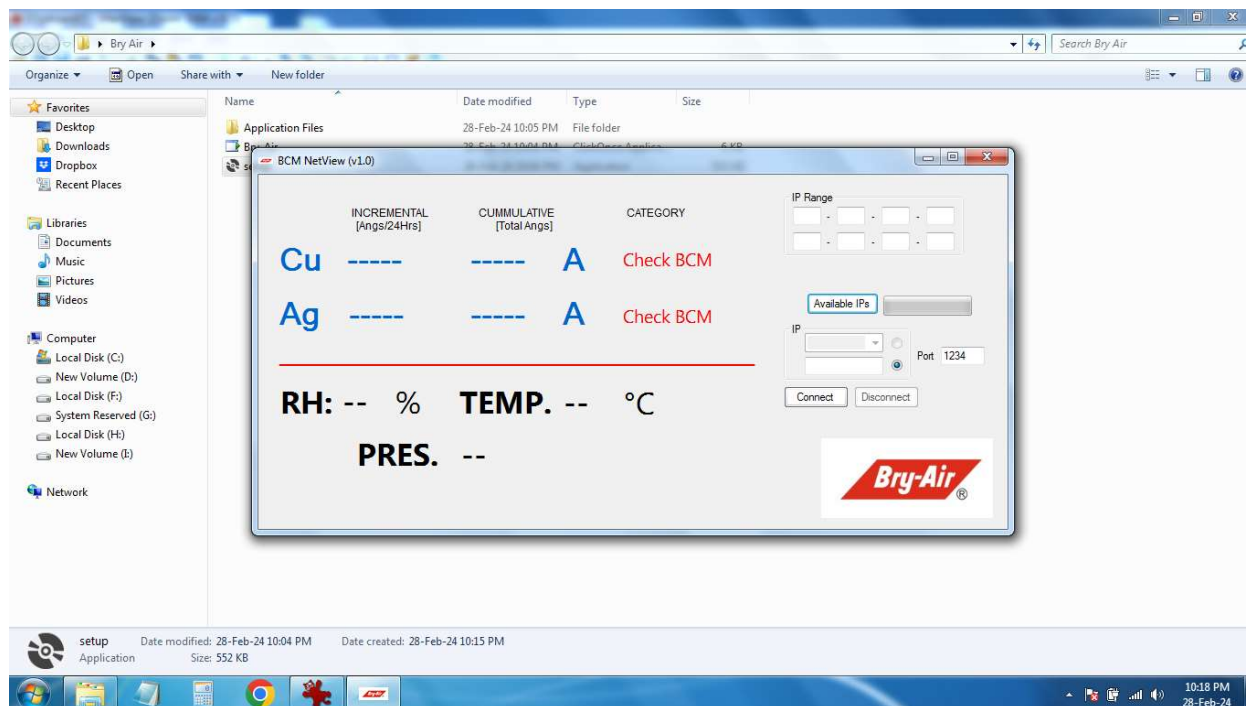
7. Inside the folder double click on setup



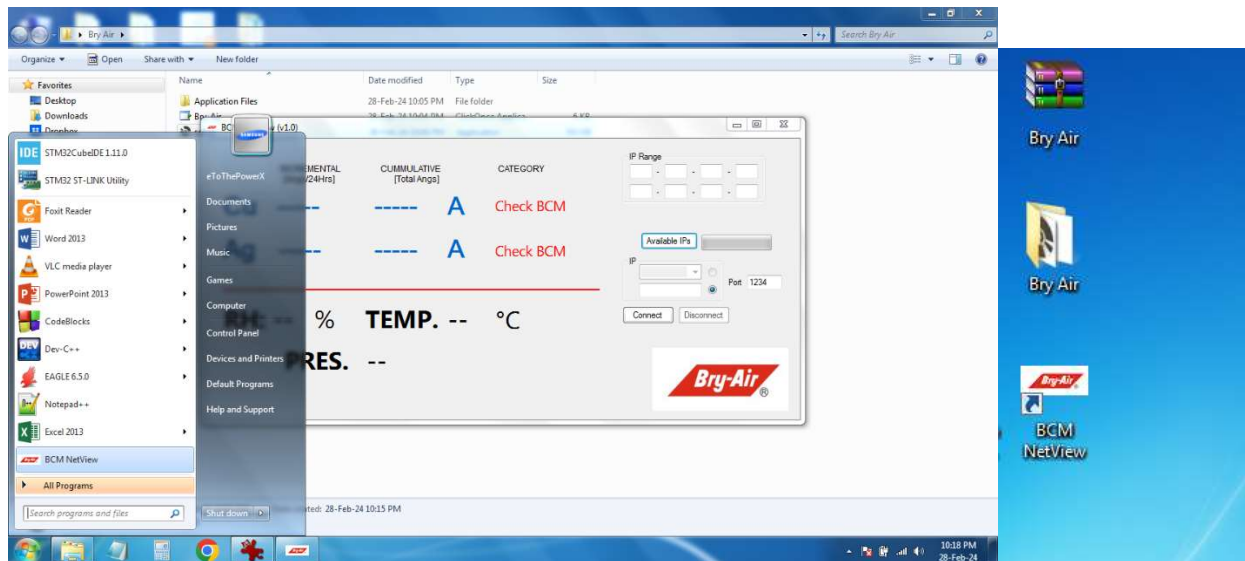
8. Install the file



9. After successful installation, a software named **BCM NetView** will appear

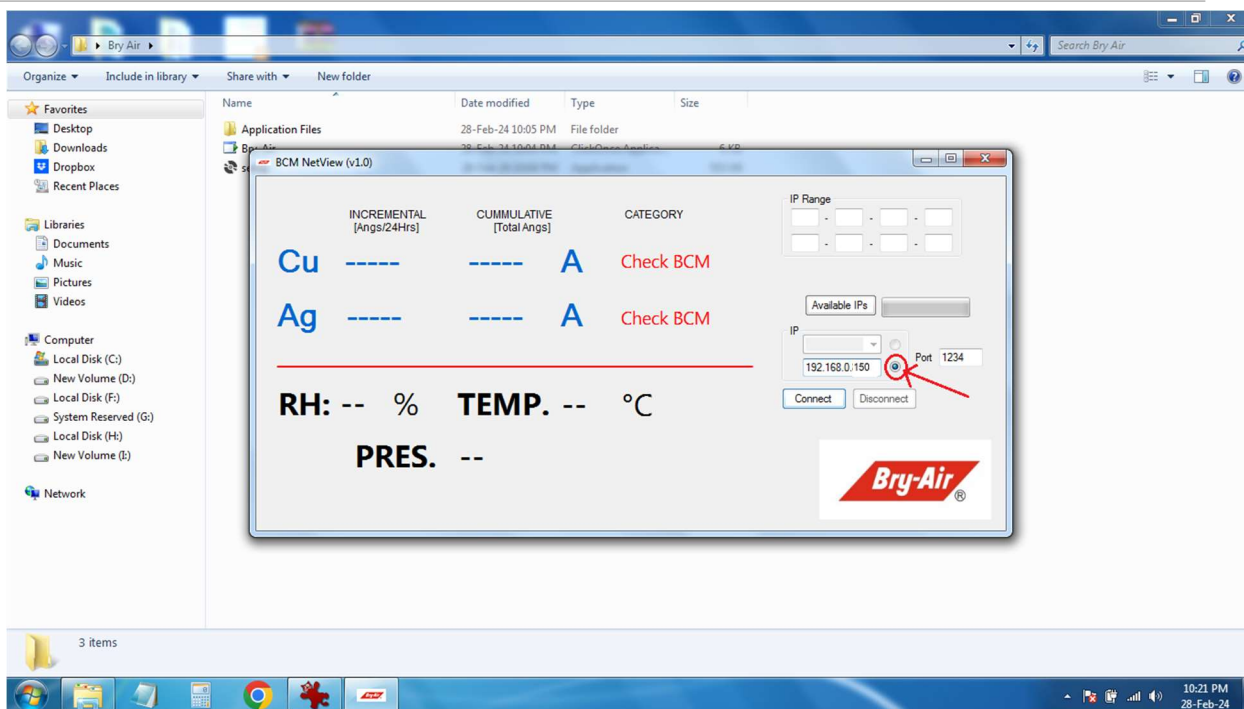


10. User can find the shortcut of the installed software inside start menu and desktop as shown below

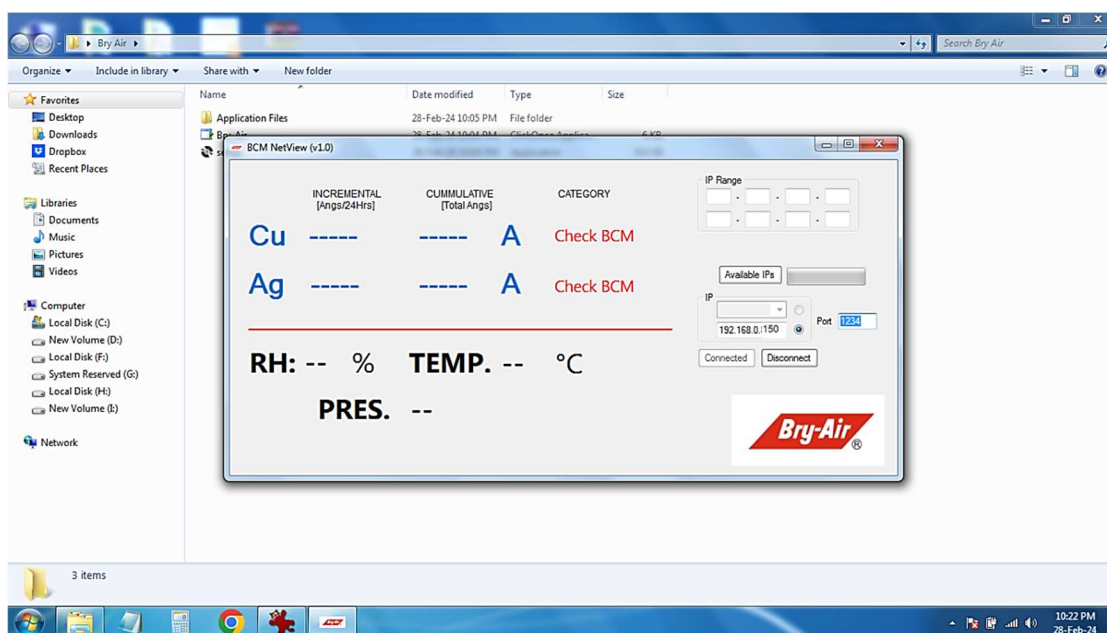


There are two methods to establish a connection between device and software, (i) Manual IP entry and (ii) Range based IP search and connect. User can choose according to their need. By default, manual entry of IP is selected.

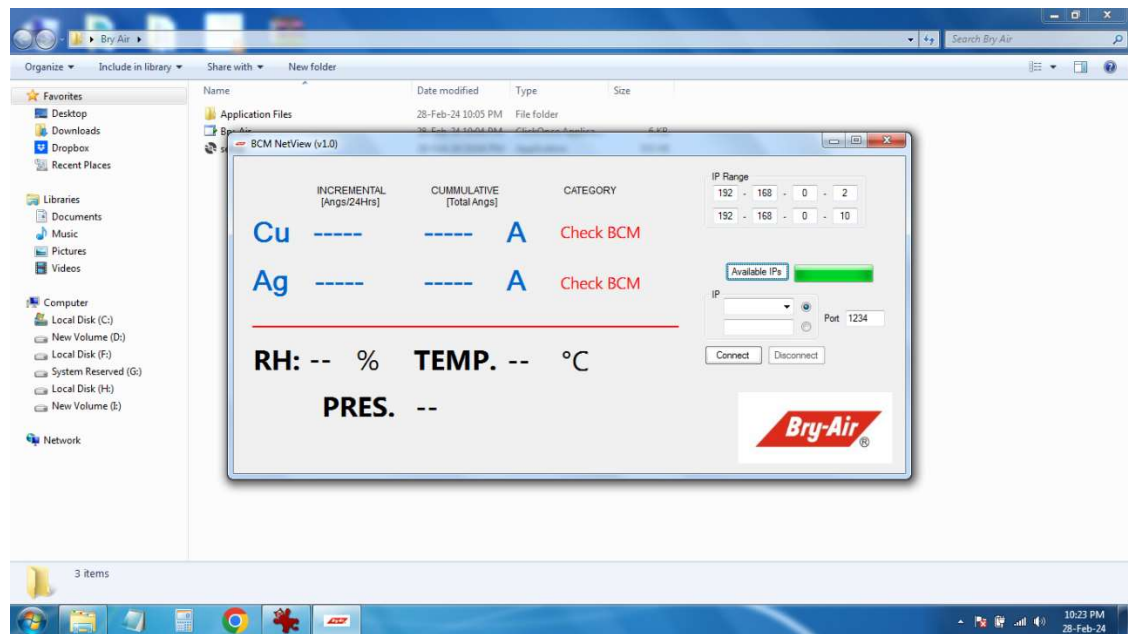
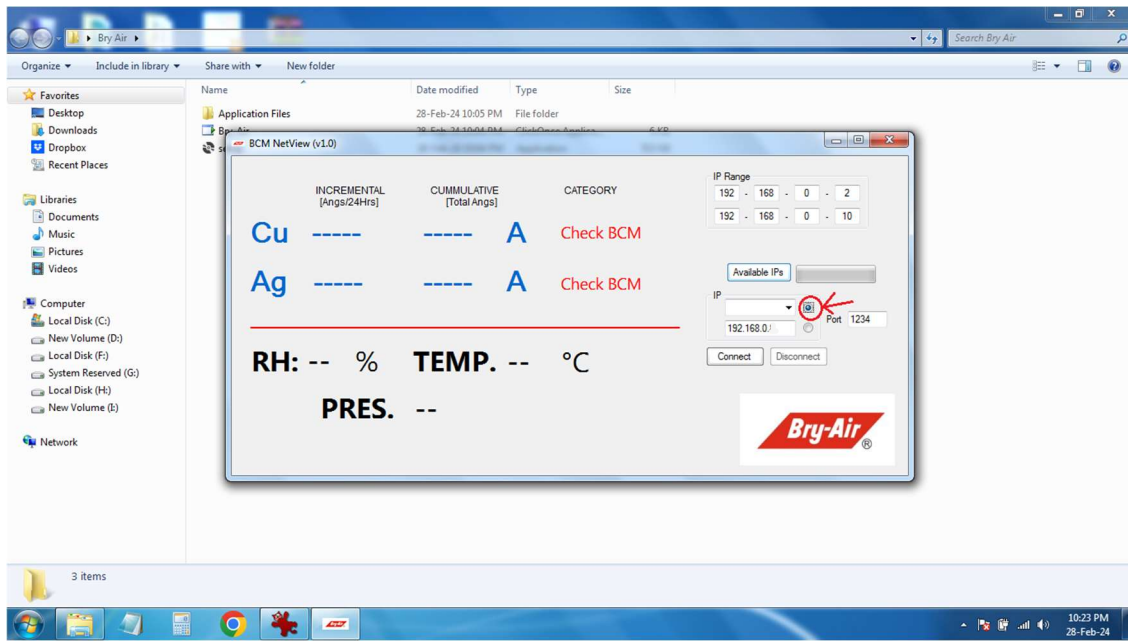
- (i) **Manual IP Entry:** Users need to type the desired IP address of the device to connect. Keeping in mind that the radio button as shown in the figure below should be selected.

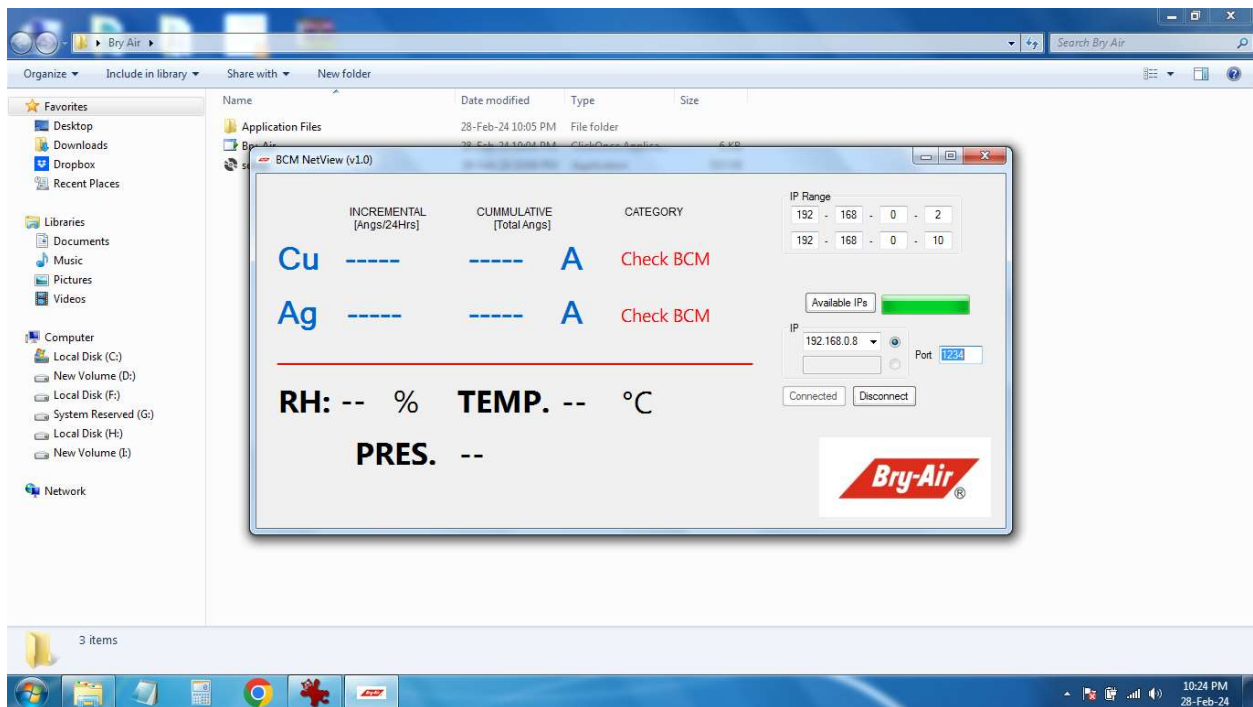
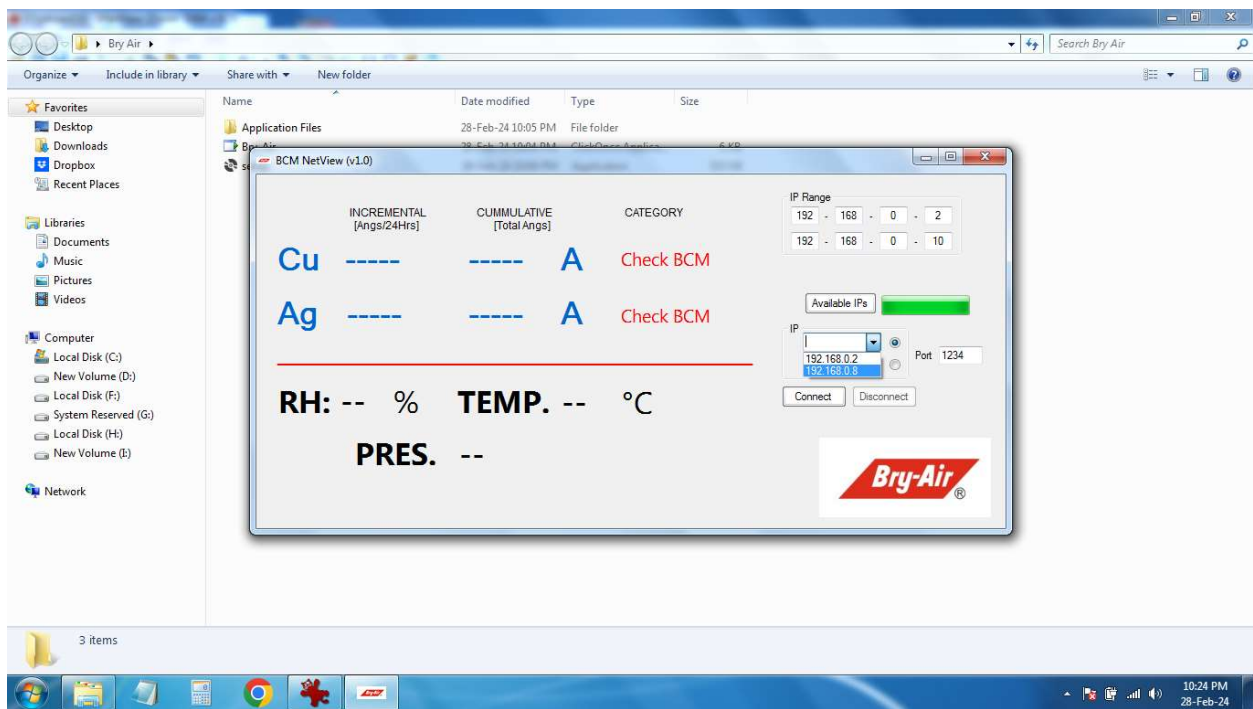


If the device is connected then after clicking on connect, user can view required data.



- (ii) Range based IP search and connect: In this method, users can set the IP range and click on the Available IP button. Status of search operation can be seen in the progress bar. And if it is completed then by clicking on the dropdown menu, available IPs can be known. Now, users can select the required IP address and click on connect. Make sure the radio button marked below should be selected.





To disconnect from the communication, user need to click on Disconnect button.